

WARATAH SQUARE RESERVE, SEACOMBE GARDENS



MARCH 2016 INFORMATION SHEET

PLAY SPACE STRATEGY BACKGROUND

In 2009, the City of Marion endorsed a Play Space Strategy to ensure the community's playgrounds were well-designed, well-located, safe and fun for users. So far, 41 play spaces have been upgraded.

As part of the strategy, a number of playgrounds will be upgraded and some will be removed to ensure that:

- Current and future play spaces are renewed at appropriate times to ensure safety of the community.
- Play spaces are in an accessible location – this may include removal of play spaces due to oversupply in a particular area. Additionally, it may include new play spaces to address a deficiency in an area.
- Council resources are used appropriately.

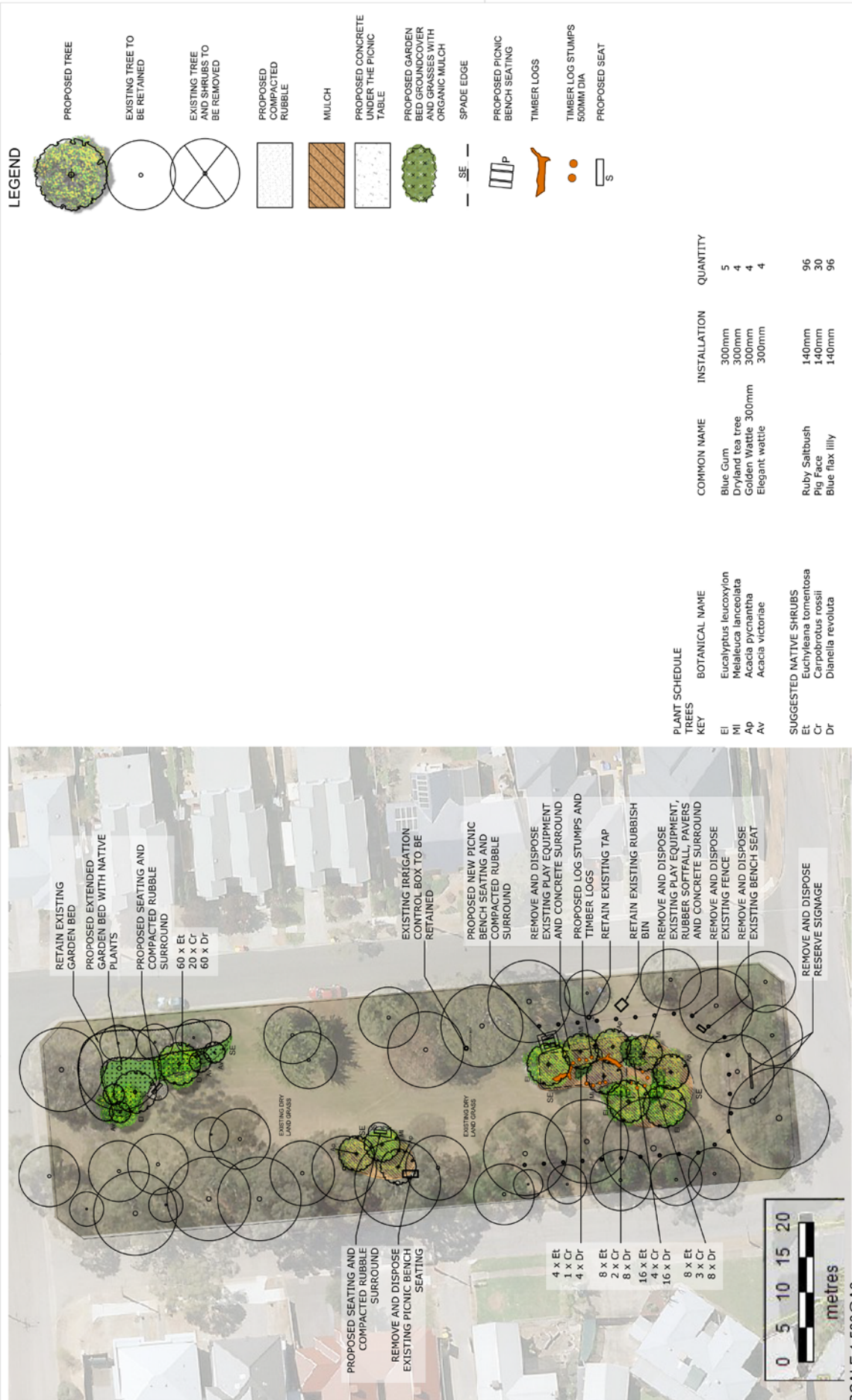
PLAY SPACE STRATEGY IMPLEMENTATION

Council has been actively implementing the Play Space Strategy and is now starting to consolidate selected playgrounds. Waratah Square Reserve at Seacombe Gardens has been identified as a reserve within Council's Play Space Strategy that will have existing play equipment removed and minor landscaping works undertaken.

Council values its reserves, and we propose to replace the playground with additional landscaping and the installation of seats and picnic bench to ensure the reserve remains a pleasant open space.

The play equipment at Waratah Square Reserve has been assessed, and requires removal to ensure the future safety of the community.

Work is due to start in April 2016.



FAQ's

• *Why is the play space being removed?*

The play equipment has been risk assessed and is coming to the end of its useable life. Council has upgraded adjacent reserves which provide better access for the wider community.

• *Is there going to be new play equipment at the reserve?*

No, there will not be new play equipment at the reserve. However, the reserve will be reinstated to create attractive, usable open space and enhance biodiversity.

• *What is going to replace the play equipment?*

The design proposes landscape plantings, tree stumps, logs, bench seats and picnic bench to replace the play equipment. Please refer to the concept plan provided.

• *What works can I expect to see happening at the reserve?*

The existing play equipment and the rubber surface will be removed. Following this, trees will be planted and mulched, and landscape furniture installed to ensure the reserve is a pleasant open space.

• *Where are the nearest play spaces?*

As part of the implementation of the Play Space Strategy various upgrades have occurred within close proximity of Waratah Square Reserve and include:

- Ramsay Avenue Reserve, Seacombe Gardens (approx. 250 metres)
- Harbrow Grove Reserve, Seacombe Gardens (approx. 350 metres)
- Cadell Street Reserve, Seacombe Heights (approx. 680metres)
- Scarborough Reserve, Dover Gardens (approx. 750 metres)
- McKay Street Reserve, Dover Gardens (approx. 800 metres)

